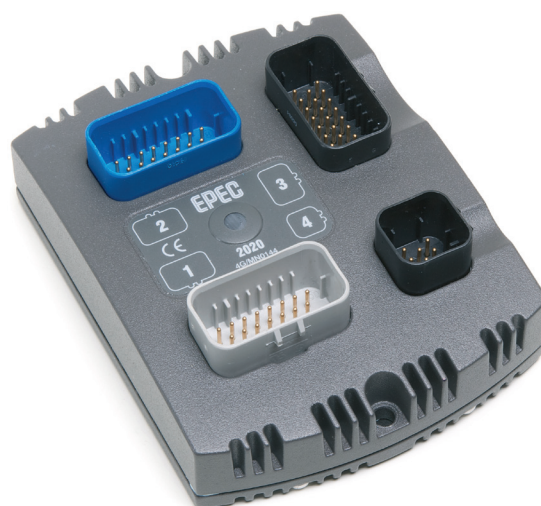


Epec 2023 Control Unit

The I/O interface in the 2023 Control Unit is optimized for cabin use, thus it has inputs suitable to connect two, 3-axis joysticks and several digital inputs to accommodate switches, keys, etc. typical in a cabin environment. In addition, it has the ability to connect keyboard matrices to it. In addition to the vast number of inputs, the control unit has a number of digital outputs and proportional (PWM) outputs for direct connections to surrounding devices.

PRODUCT ORDER CODE **E30B2023-10**



Epec 2020 Control Unit

Epec 2020 Control Unit is a compact and rugged control unit for embedded control systems. The I/O interface of the control unit is specially optimized for hydraulic controlling as it has a vast number of proportional (PWM) outputs to connect hydraulic devices from other manufacturers. To further increase the accuracy of hydraulic control, the control unit has current feedback inputs for feedback signals, e.g. hydraulic valves.

PRODUCT ORDER CODE **E30B2020-10**



CONTROL UNIT 2024 , CONTROL UNIT 2024 GL APPROVAL, CONTROL UNIT 2023, CONTROL UNIT 2020									
PROCESSOR	C167 40 MHz	APPLICATION SIZE	256 kbyte	PROGRAMMING	CODESYS 2.3	PROTECTION CLASS	IP67	SIZE	147 X 113 X 46 mm
WEIGHT	0,7 kg	NOMINAL OPERATING VOLTAGE	12/24 VDC	FULL OPERATING RANGE	10 ... 30 VDC				
OVERVOLTAGE PROTECTION	70 VDC	OPERATION TEMPERATURE	-40 ... +70°C	CONNECTORS	3 X AMP23	1 X AMP8			
I/O INTERFACE, CONFIGURATION EXAMPLE									
2024	2024 GL APPROVAL	4 X DI	4 X AI/FB	24 X PWM/DO/DI (SOURCING)	8 X A I/DI	4 X DI/DO (SINKING)	8 X DI/PI		
2023	16 X DI/PI	16 X AI/DI	4 X DI/DO (SINKING)	8 X PWM/DO/DI (SOURCING)	8 X PWM/DO/DI (SINKING)				
2020	2 X 10 X AI/FB	24 X PWM/DO/DI (SOURCING)	8 X DI/PI	6 X AI/DI	1 X DI				
I/O PINS TOTAL	2024 & 2023	52	2020	59					
COMMUNICATIONS	2 X CAN								

