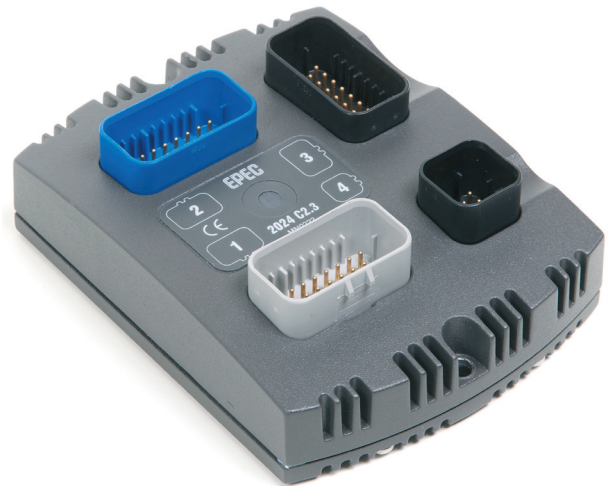


EPEC 2024 CONTROL UNIT WITH GL APPROVAL

Marine conditions?
BRING IT ON!



Epec 2024 Control Unit GL approval

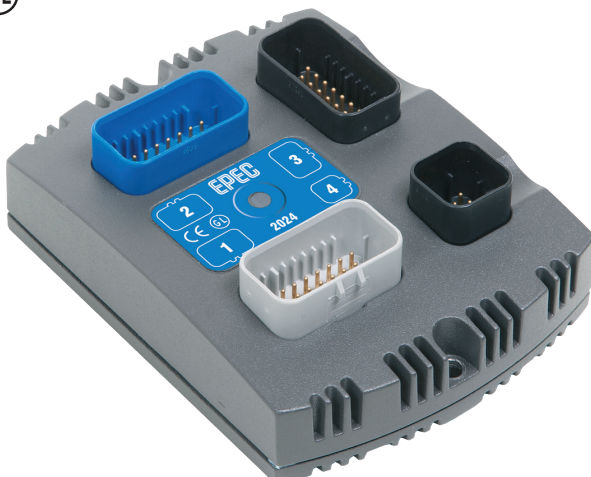
Epec control system products are designed and manufactured according to strict standards, and are certified for automotive use according to e17. Now, Epec has also launched a marine type approved version of its 2024 Control Unit into the market. GL approval (Germanischer Lloyd) allows the control unit to be also used on ships and vessels.

PRODUCT ORDER CODE E30B2024-10GL
(Analog inputs are pulled up and down)

Epec 2024 Control Unit

Epec 2024 Universal Control Unit is a compact multifunction controller and it has an optimized number of both input and output pins to be used for numerous roles in the control system. The total number of I/O pins is 52, including digital inputs and outputs, analog inputs, pulse inputs, proportional (PWM) outputs, and current feedback inputs.

PRODUCT ORDER CODE E30B2024-10
(Analog inputs are pulled up and down)



EPEC